



DataDirector for SuperOffice CRM Installation

Prevent unauthorized access to your
SuperOffice CRM data

Contents

Welcome to the DataDirector for SuperOffice CRM	3
Introduction	3
Before you Begin	3
DataDirector for SuperOffice CRM	4
Installing the DataDirector	4
DataDirector Configurator	5
Table Setup	6

Welcome to the DataDirector for SuperOffice CRM

1

Introduction

The tool that prevents unauthorized access to your SuperOffice® CRM data.

InfoBridge DataDirector enables the possibility to define roles and rights for each individual user that uses SuperOffice for Windows, SuperOffice Web or any client that is based on SuperOffice NetServer technology.

Rights are synchronized to (Remote) Travel users and Satellites and can be configured from the central database.

Before you Begin

System requirements

Before you start with the installation please read the following knowledge base article about the system requirements for DataDirector for SuperOffice.

<http://kb.infobridge.com/hc/en-us/articles/203534721>

Product Registration

Registration is done over the internet. Therefore a working internet connection is required.

Please read the following knowledge base article about the registration process.

<http://kb.infobridge.com/hc/en-us/articles/203821791>

DataDirector for SuperOffice CRM

2

Installing the DataDirector

To install InfoBridge DataDirector, run the corresponding installation application and follow the directions given by the installer.

If you are upgrading from an older version of DataDirector please read the following knowledgebase article: <http://kb.infobridge.com/hc/en-us/articles/203812822>

NOTE

There is a difference between the installation for SuperOffice SIX and SuperOffice Seven, please read this chapter carefully.

The DataDirector installer consists of two features which can be installed.

- DataDirector Admin.
- DataDirector Client.

NOTE

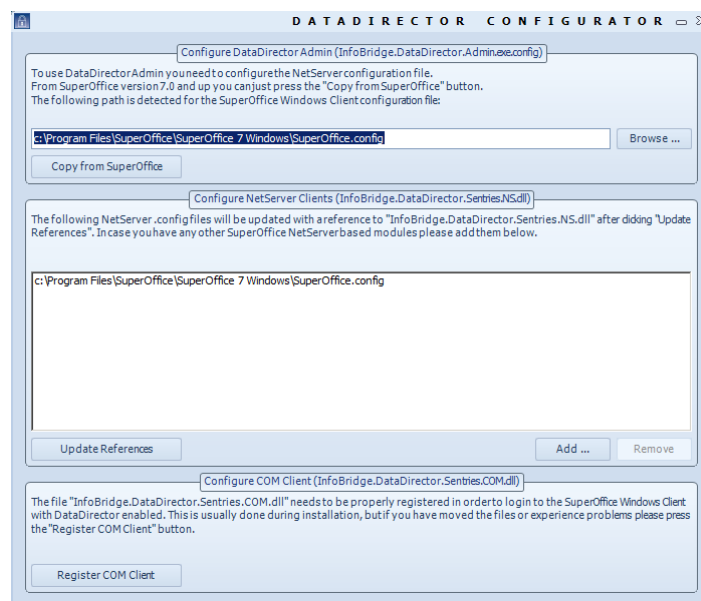
Because of the system right on the server it's wise to install DataDirector for Web into a sub folder within the Netserver virtual directory.

NOTE

You have to install all the components on the server when you are using SuperOffice WEB.

Also after installation a shortcut to run, register and configure DataDirector will be added to the Windows start menu.

When you have selected the "Launch DataDirector Configurator" option in the last step of the installation wizard the **"DataDirector Configurator"** will start and the configurator screen appears.



DataDirector Configurator

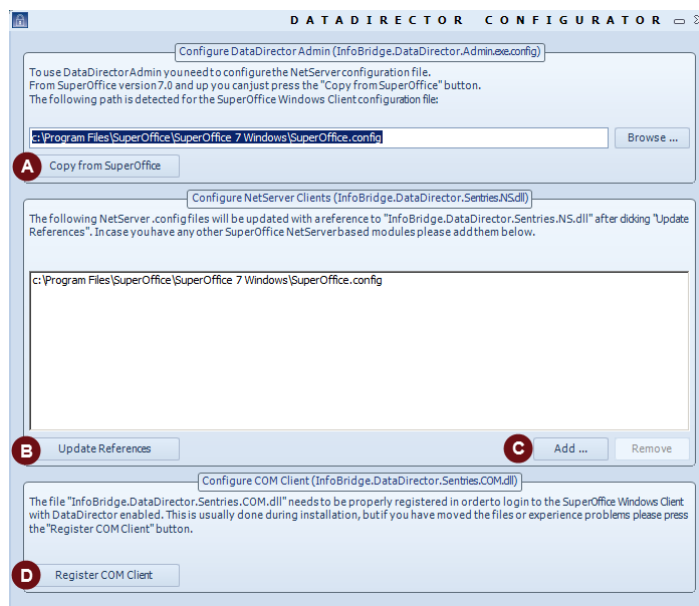
Before you can use the InfoBridge DataDirector you have to configure NetServer for SuperOffice. This topic will guide you through all the steps for a successful configuration of NetServer.

NOTE

The configuration tool must be used for every user that uses DataDirector Client or you have to deploy the configuration file to the client PC. (see this knowledge base article on deploying DataDirector: <http://kb.infobridge.com/hc/en-us/articles/203470562>)

NOTE

For SuperOffice Seven you only have to press the button "Copy from SuperOffice Windows".



- A Copy from SuperOffice:** To use DataDirector you need to configure the NetServer configuration file. For SuperOffice Seven you have only to press the button "Copy from SuperOffice Windows".
- B Update References:** Configure NetServer clients. The config files will be updated with a reference to "InfoBridge.DataDirector.Sentries.NS.dll"
- C Add:** In case you have other SuperOffice NetServer based modules you can add them here
- D Register COM client:** Click to register the "InfoBridge.DataDirector.Sentries.NS.dll"
When the registration fails try to run the configurator as admin.
Hold the ctrl-key while clicking the register button in the DataDirector configurator. This saves the command to your clipboard. This way you can copy it to your Command Prompt to check when things don't work.

Table Setup

Close the DataDirector Configurator and start the DataDirector Admin module.

When this is the first time installation of DataDirector you will be prompted with a message that the DataDirector tables cannot be found in the SuperOffice database. Click OK to create the tables using the Table setup.



A Connection Details: Fill in the connection details and click Connect

B I Agree: The “I Agree” button will become visible when the connection is successful

C Create/Delete Tables: After Agreeing you can create or delete the DataDirector tables

You can now login into the DataDirector Admin and start creating Roles and Rules. For more information please see the DataDirector User Manual.

www.crmplaza.com/Apps/DataDirector

©2012 InfoBridge Software, All rights reserved.

InfoBridge Software, CRMPlaza.com are registered trademarks of InfoBridge Software B.V.

home page	:	www.infobridge.com
knowledge base	:	http://kb.infobridge.com
support e-mail	:	support@infobridge.com
support phone	:	+31 (0)88 - 2762444